



NVLC News

The mission of Nevada Land Conservancy is to preserve and protect the special places and open spaces of Nevada for future generations.

Volume XII Issue 2

Summer 2011

NVLC Races To Protect Tahoe Meadows Parcel

By Alicia Reban

Imagine yourself in the Tahoe Meadows, known to many as Sheep Flat, in the shadow of Mount Rose. It's an 8,000-foot-high bit of heaven between Reno and Lake Tahoe. You're there to bike the Tahoe Rim Trail, snowshoe during the full moon, take the kids sledding, go running with the dogs, or picnic with your



Sheep Flat in the summer

sweetheart. You arrive, eager to drink in the alpine loveliness. Getting out you look up, and you can almost hear your heart break. There, in the middle of the Tahoe Meadows, is a new fence. A sign screams "Private Property, Keep Out!"

Few know that there is a 1.8-acre parcel of private property located in the Meadows on the north side of Nevada State Route 431. It's along the highway, and bordered on three sides by US Forest Service lands. The area is immensely popular for all sorts of recreation, and contains some of the most significant

continued on page 3



12th Annual Silver Peak "Brews with a View" Hike

Spooner-Marlette Lake Hike to Benefit NVLC

Thirsty conservationists are invited to join Silver Peak Restaurant & Brewery's 12th Annual Beer Hike on behalf of Nevada Land Conservancy, Saturday, September 24th. The event will enjoy its second year using the Nevada State Park Spooner-Marlette Lake trail.

Participants can enjoy a cold, award-winning Silver Peak beer at Marlette Lake for a suggested donation of \$5. The hike begins at 8:30 a.m. from the Spooner Lake parking facilities at the intersection of State Route 28 and U.S. Highway 50.

The hike from Spooner to Marlette Lake is roughly 9.5 miles round trip with a 1,200 foot elevation gain and no more than 5% grade, so participants are encouraged to drink lots of water when hiking (restrooms are available at Marlette Lake!). Participants can hike, bike or ride horses up the trail, and hike-in camping is

continued on page 3

INSIDE THIS ISSUE

- | | |
|---|-----------------------------------------|
| 2 | Thoughts from the Executive Branch |
| 4 | Banff 2011 Wrap-Up Report |
| 5 | Swan Lake Event; Restoration Report |
| 7 | Thank You, Donors; Welcome to New Staff |
| 8 | Calendar |

Officers

Trent Schmidt, Chair
Karen Ross, Vice Chair
Harry Parsons, Treasurer
Reed Simmons, Secretary

Trustees

Stacey Crowley
Candace Evart
Jim Greil
Ron Johnson
Debbie Leonard
Tina Miller
Karen Mullen-Ehly
Annaliese Odenchantz
Craig Schriber

Advisory Board

Nazir Ansari
Stephen Ascuaga
Chris Barrett
David Bobzien
Jack Byrom
Jean Carbon
Joe Crowley
Frankie Sue Del Papa
Karen Dennison
Vivian Freeman
Ginnie Kersey
John McClain
Alan Means
Willie Molini
David E. Moore
Tina Nappe
William J. Raggio
Katy Simon
Gene Sullivan
Caryn Swobe
William Thornton
Jack Trainor
Sue Wagner
Don Wilkerson
Brad Woodring
Gregg Zive

Liaisons

JoAnn Meacham – City of Sparks
Doug Doolittle – Washoe County

Staff

Alicia Reban,
Co-Executive Director
Chuck Pope,
Co-Executive Director
Becky Stock,
Projects Director
Sonya Hem Giroux,
Operations Director
Patricia McCleary,
Conservation Director
Sarah McNeal,
Development Assistant
Ela Zawadzka,
Executive Assistant



Thoughts from the Executive Branch

By Chuck Pope

At the time our spring issue of NVLC News came out we were all anticipating spring to actually arrive in Nevada. It sure seems like we went from winter directly to summer this year. The snowpack in the high country was legendary. I took a hike with a friend in mid-July into a lake near the headwaters of the Walker River in the Sierra Nevada and not surprisingly, the lake was still frozen and the peaks were covered in snow. Our rivers and streams should have plenty of water well into the fall season. I hope you have had a chance to get out and explore the stunning beauty of Nevada's backcountry and the Sierra Front Range. We are truly fortunate to have such outstanding landscapes right in our backyard!

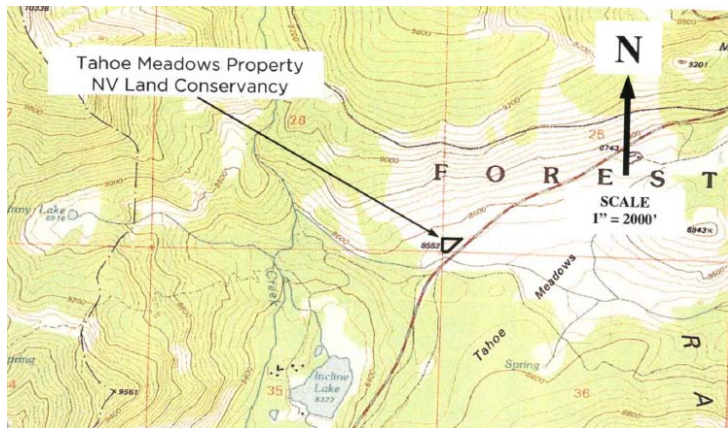
In cooperation with our many partners, NVLC has been hard at work to help protect the lands we all treasure. In order to further our mission of preserving and protecting the special places and open spaces of Nevada for future generations; securing important natural lands, agricultural lands as well as recreational opportunities, careful planning must be a part of our project analysis and selection.

This year, NVLC invited The Conservation Fund to engage with our organization in a conservation planning process to help us think strategically about western Nevada, the Sierra Front Range and areas along the bordering states of California and Oregon. Why is a strategic conservation plan important? There are numerous benefits, but in a nutshell: it will help NVLC to prioritize our conservation efforts, make wise use of our staff and financial resources, and provide a pathway for smart decision-making as we are presented with conservation opportunities. With great expectation, the written plan along with the resource inventory map series is scheduled to be completed by the end of the year, and will serve as an important guide for our organization well into the future.

Thanks so much for your continued partnership and interest in Nevada Land Conservancy! ❖

NVLC News is printed quarterly by Nevada Land Conservancy. Issue Date: Summer 2011
P.O. Box 20288, Reno, NV 89515 Ph 775-851-5180 / Fx 775-851-5182 www.nvlc.org and info@nvlc.org

Tahoe Meadows - continued from page 1



streamside habitat in the Meadows along the headwaters of Ophir Creek. Native Americans have gathered here for thousands of years. More recently, water purveyors created the Comstock-era Ophir Creek Flume that sent water rushing toward Virginia City, and Basque sheep herders spent summers here grazing their animals on the nutrient-rich grasses.

Nevada Land Conservancy first worked to acquire Tahoe Meadow's "missing link" in 2004, but those early attempts were unsuccessful. Given time,

patience, and the benefit of additional experience, we were ready to act upon learning it was being put back on the market. We raced to pull together the necessary funding to bring the land and water into our protection until such time as public funding becomes available. Limited development is possible on the parcel - some will remember a proposal a number of years ago for a lodge-type bed and breakfast. It belongs where everyone thinks it already is: in public ownership as part of the public playground that surrounds it.

We stretched. We reached. We went way out on a limb and gave it our very best. This is not only a story about quick action to protect a very special place, but it is also a request for help. If you are able to help us pay off the loan, or give a little extra to help us with our acquisition costs, or even earmark a legacy gift for our revolving Land and Water Protection Fund to ensure we'll always be able to jump into rescue mode when heaven and earth must be moved to protect key lands and waters - your help is especially appreciated.

If you'd like more information on supporting the Tahoe Meadows acquisition, please contact Alicia Reban at (775) 851-5180 or alicia@nvlc.org. ❖



Sheep Flat at Tahoe Meadows

Silver Peak Hike - continued from page 1



Beautiful Marlette Lake

available near the lake. Bikes are available for rent at Spooner Lake --775-749-5349 and www.flumetrail.com.

The trailhead marker to Marlette Lake is located at the eastern most end of the Spooner parking lot past the toilets. Remember, our state parks need help too -- parking is \$12 per vehicle with a \$2 discount for Nevada residents (please consider carpooling).

Silver Peak Restaurant and Brewery is located at 124 Wonder Street, the Silver Peak Grill and Taproom is at 135 N. Sierra Street, and the new Slice of the Peak is located at 300 E. Second Street. For hike details, please call Nevada Land Conservancy at 775-851-5180. ❖



Participants at the 2010 hike relax at trail's end - photo by Becky Stock

Many thanks to our local sponsors of the 2011 Banff Mountain Film Festival World Tour on March 16!

Made Possible Locally By:
Kirk and Annaliese Odencrantz

Founding Sponsor



Host



Media



Supporting Sponsors



Patron Sponsors & Exhibitors



Program Sponsor

In-Kind Sponsors



2011 Banff Mountain Film Festival Raises Funds for Nevada Land Conservancy

Many thanks to the sponsors of the 2011 Banff Mountain Film Festival, held March 16th in the Rose Ballroom at John Ascuaga's Nugget, who helped raise more than \$37,000 for Nevada Land Conservancy in support of our work to preserve and protect special places and open spaces of Nevada for future generations!

Event sponsors included: John Ascuaga's Nugget, Kirk & Annaliese Odencrantz, NV Energy, REI, Reno Radio Reps, Reno News & Review, Healthy Beginnings, Rogue Wilderness Adventures, Great Basin Brewing Company, Reno-Tahoe Odyssey, and JBR Environmental Consultants, Inc.

NVLC staff would also like to thank our amazing crew of volunteers for helping to choose the films, selling raffle tickets, setting up and tearing down the event, and doing all of the other innumerable things needed to make this event a success!

Mark your calendars! The Banff Mountain Film Festival returns to the Truckee Meadows on Thursday, April 5, 2012 at John Ascuaga's Nugget! ❖



The crowd in John Ascuaga's Nugget's Rose Ballroom enjoys the 2011 Banff film festival - photo by Sonya Giroux

Restoration and Stewardship Report

Thanks to the combination of above average snowpack, local precipitation and cool spring weather our local noxious weeds have been growing like, well, weeds! But thanks also to generous funding from the Truckee River Fund, Carson Truckee Water Conservancy District, and State Question One the implementation of the Truckee Meadows Weed Coordinating Group's action plan for fighting weeds has guided control efforts that will continue into the fall season.

To open weed season, we hired the Great Basin Institute IVCE crew for seven weeks beginning in May to hand-spray parks, trails, and public lands adjacent to the Truckee River or Truckee River tributaries. Unfortunately, this season's weather required re-treatment of several areas including 20 acres of yellow star thistle at Rancho San Rafael in August.

Shovels were also helpful for weed extermination. During the May 7th Great Truckee Meadows Cleanup and Weed Dig more than 250 volunteers donated their time to dig up musk and scotch thistle at seven sites along the Truckee River.

The above average precipitation supported our spring restoration project at Dorostkar Park where we planted trees and shrubs to restore wildlife habitat within a previously weed infested site. Thanks to a Nevada Division of State Lands Conservation and Resource Protection Grant, matched with Truckee River Fund monies, Otis Bay Ecological Consultants planted twenty-five cottonwood trees next to the Truckee River to help cool the water in the future, and more than 250 shrubs in shrub gardens, which we hope will naturally grow and expand throughout the park replacing the weeds with native plants.

Our 2011 weed action plan includes fall treatment of Medusahead and additional restoration projects, all planned to improve the health of our community's natural resources. Fighting weeds is a constant battle, but we're fortunate in the Truckee Meadows to have a community that supports weed control and restoration work. ❖



Crews planting seedlings at Dorostkar Park



Avocets at Swan Lake

Swan Lake Open House and Restoration Event, October 1

More than one hundred and fifty species of birds can't be wrong; Swan Lake Nature Study Area is a very special place! Come check it out for yourself Saturday October 1st between 10 a.m. and 2 p.m. during the first ever Swan Lake Community Open House & Restoration Event. The day will include planting projects to protect the vulnerable riparian area, birding hikes, and an opportunity to review and discuss our master plan, which was recently updated to enhance protection and preservation of wildlife, natural resources, and the recreation opportunities available at Swan Lake Nature Study Area.

Robin Wilson, Nevada Director of Bird Conservation for the Audubon Society - Important Bird Area Program, will purchase almost 300 riparian plants to transplant

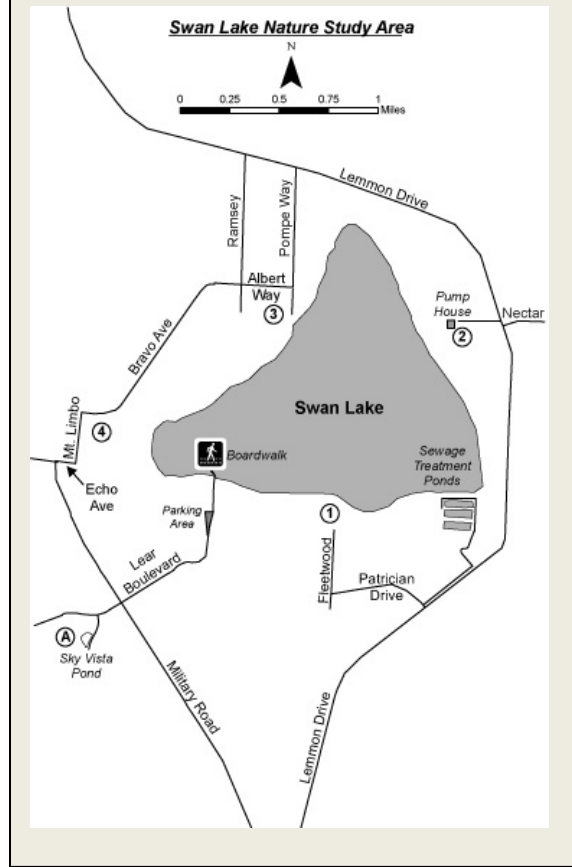
Continued on page 6

with volunteer help, thanks to funding from U.S. Fish and Wildlife. The restoration work will stabilize a section of the creek flowing into Swan Lake prone to flood blow-outs. These transplants will also provide important riparian habitat for roughly one hundred neo-tropical bird species that depend on Swan Lake every year for breeding and nesting habitat.

The Swan Lake Advisory Board believes a hands-on outreach approach is the best way to share the beauty of Swan Lake with the community, and we look forward to listening to visitors and providing information about the history of Swan Lake and our goals and objectives. In addition, we hope the open house will generate volunteers for long-term monitoring, noxious weed removal, and habitat restoration projects.

How to get to Swan Lake

From the I-80 & US 395 interchange, travel approximately 6 miles north on US 395 to Exit 74 Lemmon Drive. Turn right (north) onto Lemmon Drive Exit 74, follow Lemmon Drive 0.8 mile north to Military Road. Turn left (northwest) and follow Military Road 1.5 miles to Lear Boulevard. (Side Trip A) Turn right (east) onto Lear Boulevard and drive 0.4 mile to its end at a gravel road. Turn left and drive 0.2 mile to the Swan Lake NSA parking lot. Walk to the boardwalk. Trails from the interpretive area preceding the boardwalk also provide birding access around the entire southwestern shore.



Grace and her mommy find a goose egg at Swan Lake

Since 2000, the Swan Lake Nature Study Area Advisory Board has included nine organizations working together to manage the land and resources: BLM (780 acres), Nevada National Guard (300 acres), Washoe County (140 acres), Lahontan Audubon Society, Nevada Department of Wildlife, Nevada Land Conservancy, City of Reno, Lemmon Valley Homeowners and Washoe County School District.

In 2010, Nevada Land Conservancy secured a grant through the National Park Service Rivers, Trails, and Conservation Assistance Program on behalf of all the advisors for technical assistance to complete the recent master plan update.

We hope you'll make time this fall to participate in the first Swan Lake Nature Study Area Community Open House & Restoration Event October 1, 2011. Enjoy the beauty of the Great Basin and its wetlands and sagebrush steppe habitat with your friends and family, and learn more about what Swan Lake has to offer... and in turn, what you can do to help Swan Lake.

Details: Becky Stock at Nevada Land Conservancy 775 851-5180, or becky@nvlc.org. ❖



Volunteers at Swan Lake, 2010

Thank You NVLC Donors: January-July 2011!

John "Johann" Amling
Valerie Andersen
Thomas and Judith
Anderson
Ann Barnard
Roger Best
Laura Brigham and Brian
Beffort
Margaret Byerly
Stacey and Tim Crowley
Andrea and Drennan Clark
Dean DeGidio and
Mackenzie Banta
Douglas and Laurie
Doolittle
Joe and Elsie Doser
George Drews and Irene
Babcock
Ellen and R. L. Driscoll
Sheila and Joseph Erlach
Hank Garell
Italo and Gloria Gavazzi
Marna Griffin
Mary Harmening
Julie and Lelan Harris
K.G. and Eva Havelik
Jeff and Carci Hayden
Roberta Henriques
Elwood Hill
Yvonne Jerome
Bob and Sandra Kautz
Mary Ellen Krakora

Arlene Kramer
Curt Langdon and Robin
Chaffey
Linda Langford and
Maryann Truitt
Eric Lerude
Meg and Stan MacDonald
Patrick and Rae Ann
Mathews
Grant and Cynthia
Mastick
James R. and Lynn
Megquier
Andrea Minor
Ed Monnig and Jackie
Wedell
Karen Mullen-Ehly and
Ray Ehly
Margaret Nazy
Annaliese Odencrantz
Brennan O'Keefe
Armand and Elizabeth
Otis
George and Patricia
Rausch
Brian and Jenifer Root
Ted Short
Marge Sill
David and Barbara
Snelgrove
Mike Stone and Mrs.
Norma Brownell

Doris Sumner
Joyce Thompson
Linda Thompson
Sara and Jeff Thompson
Alfred D. and Rita S. Truelove
Bruce Van Dyke
Tom and Mary Waddell
Sharon Walbridge
Victor and Rebecca Zatarain

In Memory of Janet Hurst

Mary Traynham
Pamela Feach
Gifts in the name of: Brian and
Sarah Irvine; Gary Hurst;
the Brian Irvine Family; and
Clare Connell

Matching Gifts

Illinois Tool Works Foundation
Patagonia
REI

In-Kind

Lionel, Sawyer and Collins,
Attorneys at Law
Pangborn and Company
Washoe County



New Staff Member - Welcome Ela Zawadzka!

You may have noticed a pleasant new voice on the other end of the line when you call the Nevada Land Conservancy office of late. NVLC is thrilled to welcome the newest addition to our hardworking team, Ela Zawadzka.

Ela joined NVLC as our Executive Assistant in March of this year. Born and raised in Poland, she graduated from the University of Opole and brings 10 years of experience in publishing, PR and journalism. We also appreciate Ela's quick wit and the occasional Polish dessert she shares!

Ela has lived in the Reno area for seven years, loves the outdoors, and enjoys the wide variety of activities Reno offers. This includes hiking, biking and attending local concerts. Say hello when you see her on the trails! ❖

Get Involved!

Calendar of Upcoming Events

Saturday, September 24, 2011: **12th Annual Silver Peak “Brews with a View” Hike at Marlette Lake.** Participants can bike, hike or ride horses up the trail, and hike-in camping is available near the lake. Hike begins at 8:30 a.m. from the Spooner Lake parking facilities at the intersection of State Route 28 and U.S. 50. Details: NVLC at 851-5180. ❖

Saturday, October 1, 2011: **Swan Lake Open House.** Learn about Swan Lake, enjoy coffee with neighbors, and bring the kids for fun, educational activities! Time: 10:00 a.m. – 2:00 p.m. Please call NVLC at 851-5180 for details. ❖

Save a tree! Sign up for our e-newsletter by e-mailing ela@nvlc.org with “e-news” in the subject. Please leave your full name and address so we can find you in our database!

CHANGE SERVICE REQUESTED

P.O. Box 20288
Reno, NV 89515
Phone 775-851-5180
Fax 77-851-5182



NON-PROFIT
ORGANIZATION
US POSTAGE
PAID
PERMIT #364
RENO NV